

## Abdominal Aortic & Junctional Tourniquet (Stabilized) AAJT-S

Compression Works Inc.

### Indication for Use: Control of Difficult Bleeding in the Pelvis, Inguinal Area and Axilla

Bleeding in the pelvis, inguinal and axilla regions constitute one of the most difficult problems faced in penetrating trauma. Junctional bleeding occurs in areas of the body that are not easily amenable to tourniquet application. They are generally the areas where the torso meets the limbs.

Proximal compression of vessels is still the most effective way of hemorrhage control. The Abdominal Aortic and Junctional Tourniquet - Stabilized (AAJT-S) accomplishes this by compressing the descending aorta at or near the bifurcation of the aorta, the common femoral artery in the groin or the subclavian artery in the axilla. Human studies show that the device is effective at stopping blood flow at these sites at inflation pressures of 230 mm Hg.

#### Contraindications for Use in Abdominal Placement

- Known abdominal aortic aneurysm
- Pregnancy

#### No Contraindications for Inguinal or Axillary Placement

The risks versus benefits of the device should be considered prior to any application. The dangers of junctional bleeding include imminent exsanguination and death. If direct pressure, extremity tourniquet application or hemostatics do not result in cessation of bleeding the Abdominal Aortic & Junctional Tourniquet provides for a direct pressure capability to stop the flow of arterial blood distal to the application site. Placement over the hips provides for pressure over the hips and pelvis allowing for pelvic stabilization in the event that the pelvis is broken.

#### Preventive Maintenance Checks and Services (PMCS)

The device is packaged ready to use in sealed packaging. If the device remains in the sealed packaging no specific PMCS is required. If the packaging appears to be damaged, whether this is signs of environmental stress or physical damage, PMCS can be conducted as followed.

- Remove device from pouch
- Extend belt, inspect for cuts or fraying. Do not use if belt contains a cut extending more than 2 mm.
- Inspect ratcheting buckle for cracks or breaks.
- Inspect ladder strap for cracks.
- Inspect tubing for signs of wear and damage, if the tubing appears to be damaged, progress to the next step to ensure there is no air leak in the system.
- Inflate bladder until pressure gauge shows green indicating 250mm Hg pressure. Allow bladder to remain inflated for 5 minutes. If the pressure gauge drops to the point that the green indicator is not visible then do not use device. A pressure leak may be in the system



Multiple use one patient



Compression Works Inc.  
1634-A Montgomery Hwy #115  
Birmingham, AL 35216, USA  
www.compressionworks.com



Medical Device



CE Mark



Manufactured in USA



No Reuse

## Instructions for Use

Placement:  
Indication - bleeding in:

TRUNCAL	JUNCTIONAL USE	
Abdomen	Groin	Axilla
Pelvis/ Bilateral Legs	Inguinal area/ Leg	Axilla/ Arm
Patient's waist	Hips	Shoulder
Umbilicus	Effected Groin	Axilla

### STEPS OF APPLICATION

1. Secure device around:  
Connect ladder strap until **RED MEETS RED**
2. Position bladder over:
3. Tighten belt – **REMOVE ALL SLACK**
4. Use ratcheting buckle to complete tightening
5. Inflate bladder until green indicator shows

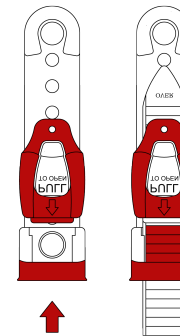
**FOR PELVIC STABILIZATION:** place around hips, center over pelvis and tighten

### THE DEVICE MUST BE VERY TIGHT BEFORE INFLATION

**The tighter the belt is prior to inflation** (achieved by good firm pulling of strap to take out all slack and using the ratcheting buckle to further tighten the device), **the more stable and effective the device.** A tight application allows arterial compression at lower bladder volumes. Lower bladder volumes result in the device working faster and with less discomfort to the patient.

The inflation system incorporates a bleed-off design to keep pressures under 300 mm Hg. The device will prevent over pressurization either by the user during inflation, or in altitude changes when ambient air pressure drops.

### RED TO RED



**JUNCTIONAL USE**  
Recommended Application Time for  
placement for GROIN/AXILLA:  
up to 4 hours

**TRUNCAL USE**  
Recommended Application Time for  
placement for ABDOMINAL PLACEMENT:  
up to 1 hour

**WARNING: REMOVAL MAY LEAD TO RESUMED BLEEDING**  
Remove in reverse order of application

*For more information contact Compression Works Inc.*

Please report any serious incident encountered related to the device to the manufacturer and competent authority of the Member State in which the event occurred.

Compression Works Inc.  
1634-A Montgomery Hwy #115  
Birmingham, AL 35216-4902  
www.compressionworks.com

**Hemorrhage Stops Here™**

**NSN: 6515-01-616-4999**



compressionworks

AAJT-S IFU US rev 002 20220228

Abdominal Placement

For Pelvic Hemorrhage or Bilateral Groin/Inguinal Hemorrhage

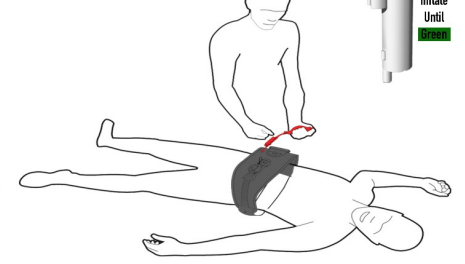
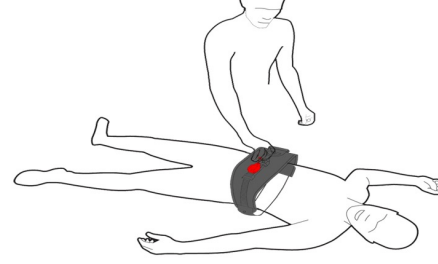
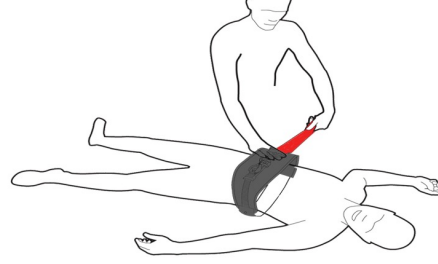
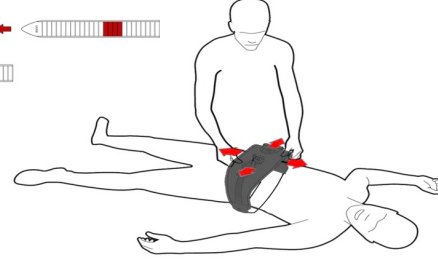
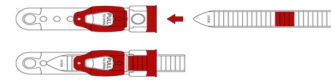
Step 1

Step 2

Step 3

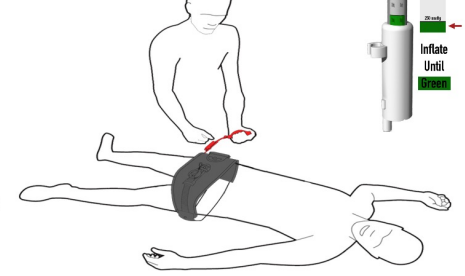
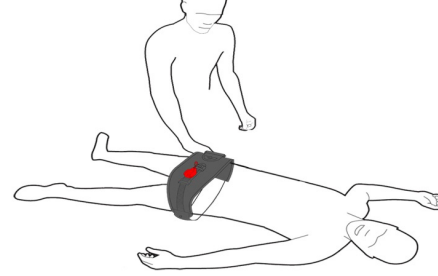
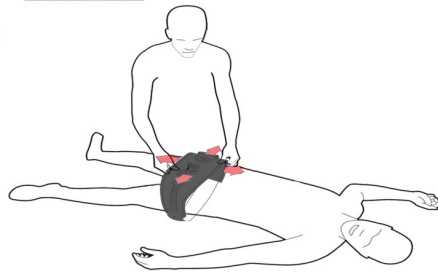
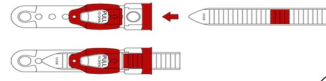
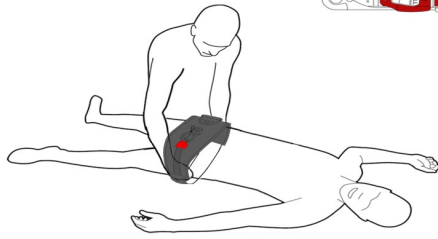
Step 4

Step 5



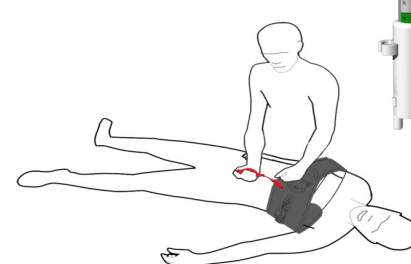
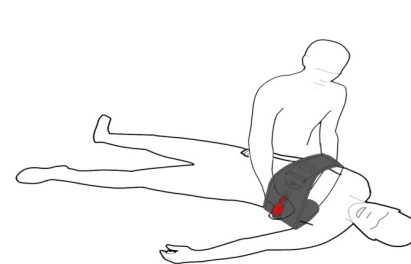
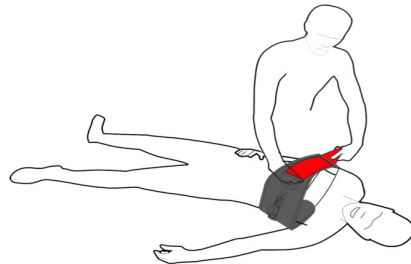
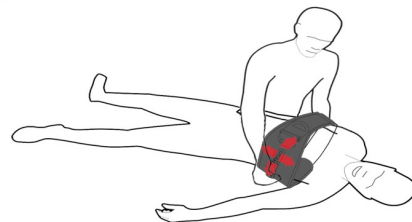
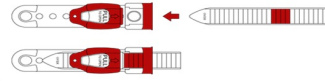
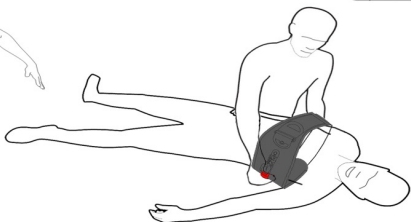
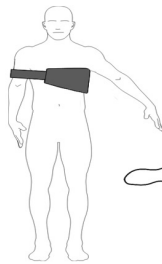
Groin Application

For Groin/Inguinal Hemorrhage



Axilla Application

For Axilla Hemorrhage



Pelvic Application

For Pelvic Fracture Stabilization

